

Solar roof mounting structures

BP RM TL & TN Series

The TL and TN range of roof mounting structures are designed to allow simple and neat attachment of solar modules to pitched roofs. Supplied as a kit, the system is made of corrosion resistant aluminium and stainless steel. It is modular, flexible and easy to install on either corrugated metal (TN) or tile (TL) roofs. The kit has been professionally engineered to meet all relevant Australian wind codes and is supplied complete with all hardware and fixings.

How it works

The BP RM mounting system is a fixed angle structure, designed to attach a solar array in the same plane as an existing roof.

It uses pairs of aluminium channel and specialised fixing components, which are designed to allow rapid and simple attachment of solar modules to most pitched roofs. Individual pairs can then be interconnected using the optional joiner kits providing great flexibility in the configuration of the array.

The kit can be ordered with mounting brackets to suit tin or tile roofs. To enhance flexibility, the tin system attaches to roof battens, and the tile system attaches to rafters. Solar modules are attached using 'top clamps' avoiding the need to drill frames or access the underside for mounting. These also have the added feature of security fasteners to prevent easy removal of solar modules.

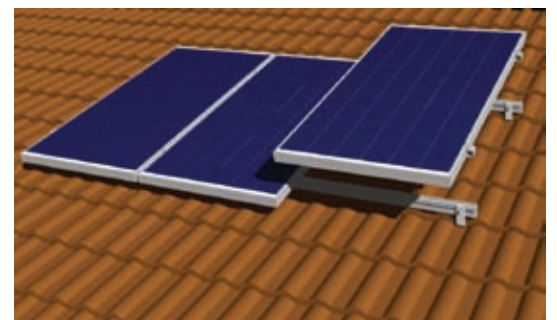


A proven design

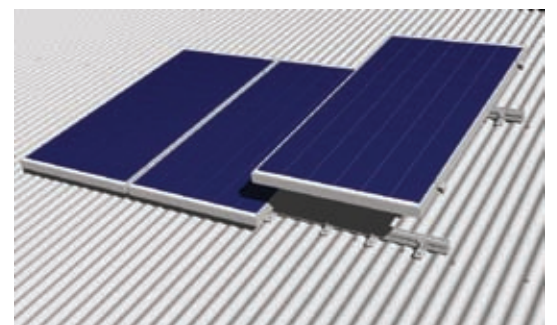
The BP RM mounting system has been specially engineered and tested to provide optimum cooling for the solar modules, whilst blending attractively and subtly with the roof.

As a pre-engineered kit, you can rest assured that it is corrosion-resistant, designed to meet or exceed Australian wind codes and will save you time by providing everything you need in a modular and expandable kit.

The system can be used in Australia for domestic and large-scale commercial applications. Its simplicity and speed-of-use have made it one of the most popular solar module roof mounting systems available.



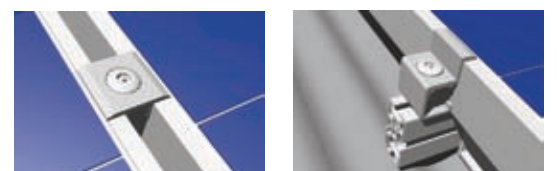
The RM mounting system on a tiled roof.



The RM mounting system on a tin roof.

Key features:

- Modular and expandable design
- High quality aluminium mounting profile
- Stainless steel fasteners
- Quick 'top clamp' mounting of solar modules
- Security fasteners in clamps
- Fast and easy to install
- Allows airflow beneath the solar modules to maximise performance
- Detailed installation manual for installers
- Designed to comply with the requirements of AS1170
- Robust and a practical length for transport



Security fasteners on module clamps.

Solar roof mounting structures BP RM TL & TN Series

Model	BP RM 3TL	BP RM 3TN	BP RM 4TL	BP RM 4TN
General information				
Roofing material	Tile	Corrugated metal (tin)	Tile	Corrugated metal (tin)
No. solar modules ⁽¹⁾	3	3	4	4
Mounting rail length (mm)	2487	2487	3297	3297
No. roof interface fixing points per rail	3	10 ⁽²⁾	3	13 ⁽²⁾
Approx. structure area [incl. modules] (m ²)	3.9	3.9	5.2	5.2
Approx. weight on roof [incl. modules] (kg)	60	60	80	80
Kit contents:	2 x mounting rails 4 x top clamps 4 x end clamps 6 x tile roof hooks c/w fasteners	2 x mounting rails 4 x top clamps 4 x end clamps 20 x tin roof hooks c/w fasteners	2 x mounting rails 6 x top clamps 4 x end clamps 6 x tile roof hooks c/w fasteners	2 x mounting rails 6 x top clamps 4 x end clamps 26 x tin roof hooks c/w fasteners

Mounting requirements

Minimum distance to any roof edge (mm)	900
Roof angle design range:	
Tile	22.5° to 45°
Corrugated metal	10° to 45°
Maximum wind speed regions ⁽³⁾ :	
Tile	Region B (intermediate) Terrain Category 2
Corrugated metal	Region C (cyclonic) Terrain Category 2 ⁽⁴⁾

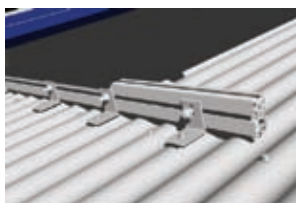
Overall dimensions

The solar modules attach to mounting rail kits in groups of three or four modules.

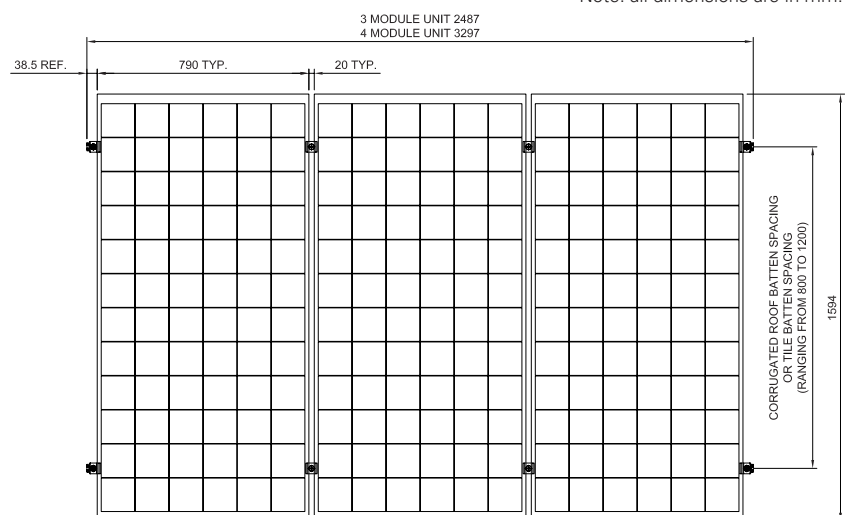
Note: all dimensions are in mm.



Tile roof interface



Tin roof interface



⁽¹⁾ The mounting system is designed for large area panels (72-cell), however, the mounting structure can be used with 36-cell panels. Additional module clamps are required and are not included in these kits.

⁽²⁾ The number of fixing points and spacing for mounting to corrugated metal roofs correlates to that of the roof sheet fixing and spacing.

⁽³⁾ Regions based on AS1170. Conditions apply in relation to the effects of terrain categories and topographic multipliers. These can affect suitability for fixing with in the various regions. Each site and roof structure integrity must be assessed prior to any installation to confirm suitability.

⁽⁴⁾ Additional brackets are required for mounting to corrugated metal roofs in Region C (Cyclonic) Terrain Category.